

Big McKenzie Lake Zebra Mussels: Status & Next Steps

Pamela Toshner - Lake Biologist

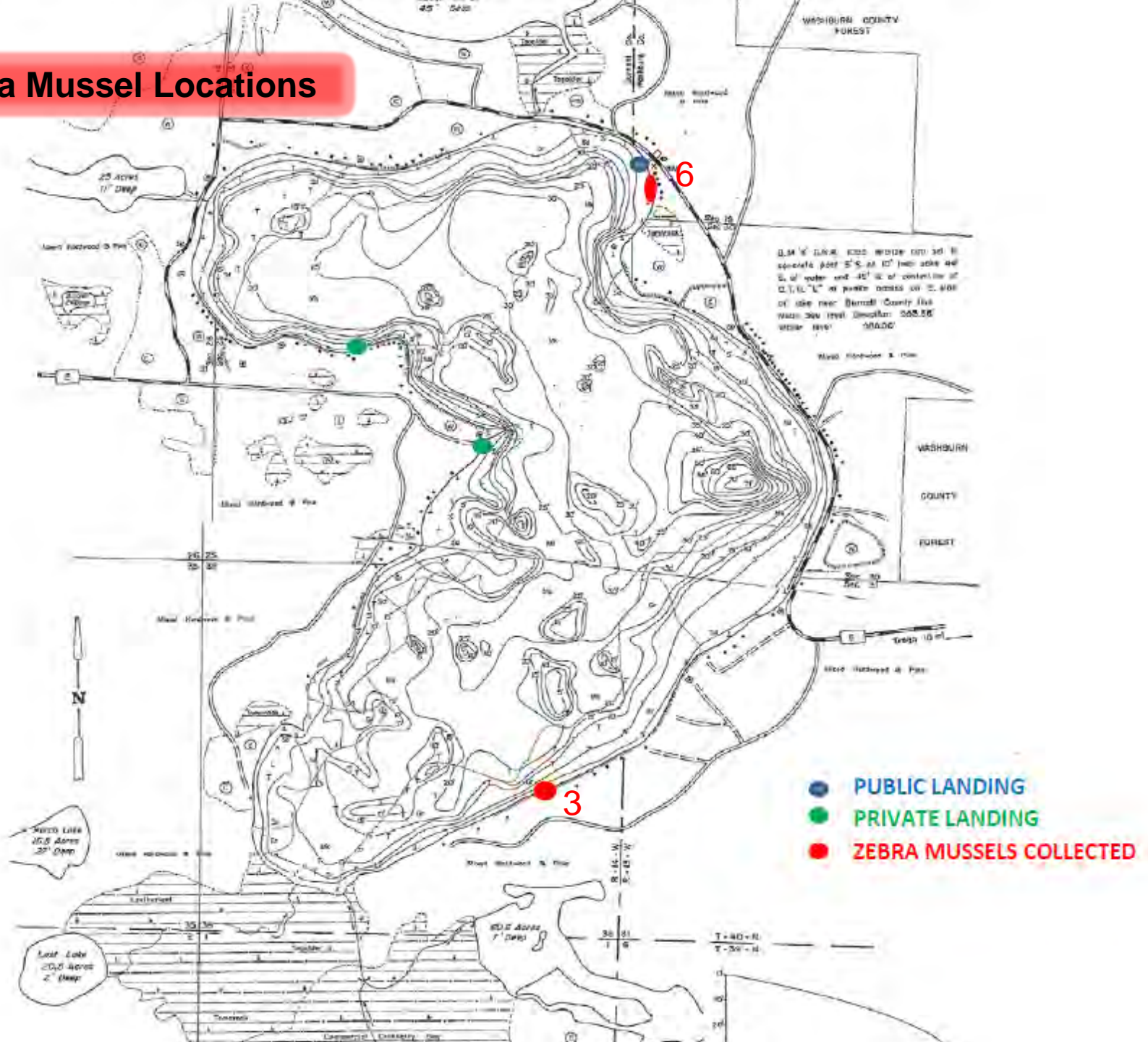


Timeline

- **October 20th**: property owner removes pier, discovers 2 attached zebra mussels, and brings them to DNR who confirms identify. DNR staff returns to the property for additional monitoring, and finds a single zebra mussel attached to a water intake filter. Counties contacted.
- **October 21st**: McKenzie Lakes Association contacted.
- **October 27th**: DNR staffs 2 crews/boats for follow-up monitoring using early detection protocol and find additional 6 zebra mussels on a single boat lift out of several hundred that were monitored.
- **November**: Zebra Mussels estimated to be 1 year or less old. Veligers not present in October 27th samples. Pulling together grants and management team.
- **December 1st**: public information meeting.



Zebra Mussel Locations





- Purpose: develop monitoring, watercraft inspection, education and management strategy over coming months and years
 - McKenzie Lakes Association
 - Burnett County Lakes & Rivers and Washburn County Lakes & Rivers Associations
 - Burnett & Washburn Counties
 - WDNR
 - *St. Croix Tribe*
 - *National Park Service*
 - *Other?*

Next Steps

- McKenzie Lakes Association – AIS Early Detection & Response and Clean Boats Clean Waters Grants
- Burnett County – modifying existing AIS Education, Prevention & Planning Grant
- Burnett & Washburn Counties – applying for future AIS Grants
- Monitoring – both professional and volunteer
 - DNA analysis
- Watercraft inspection and decontamination

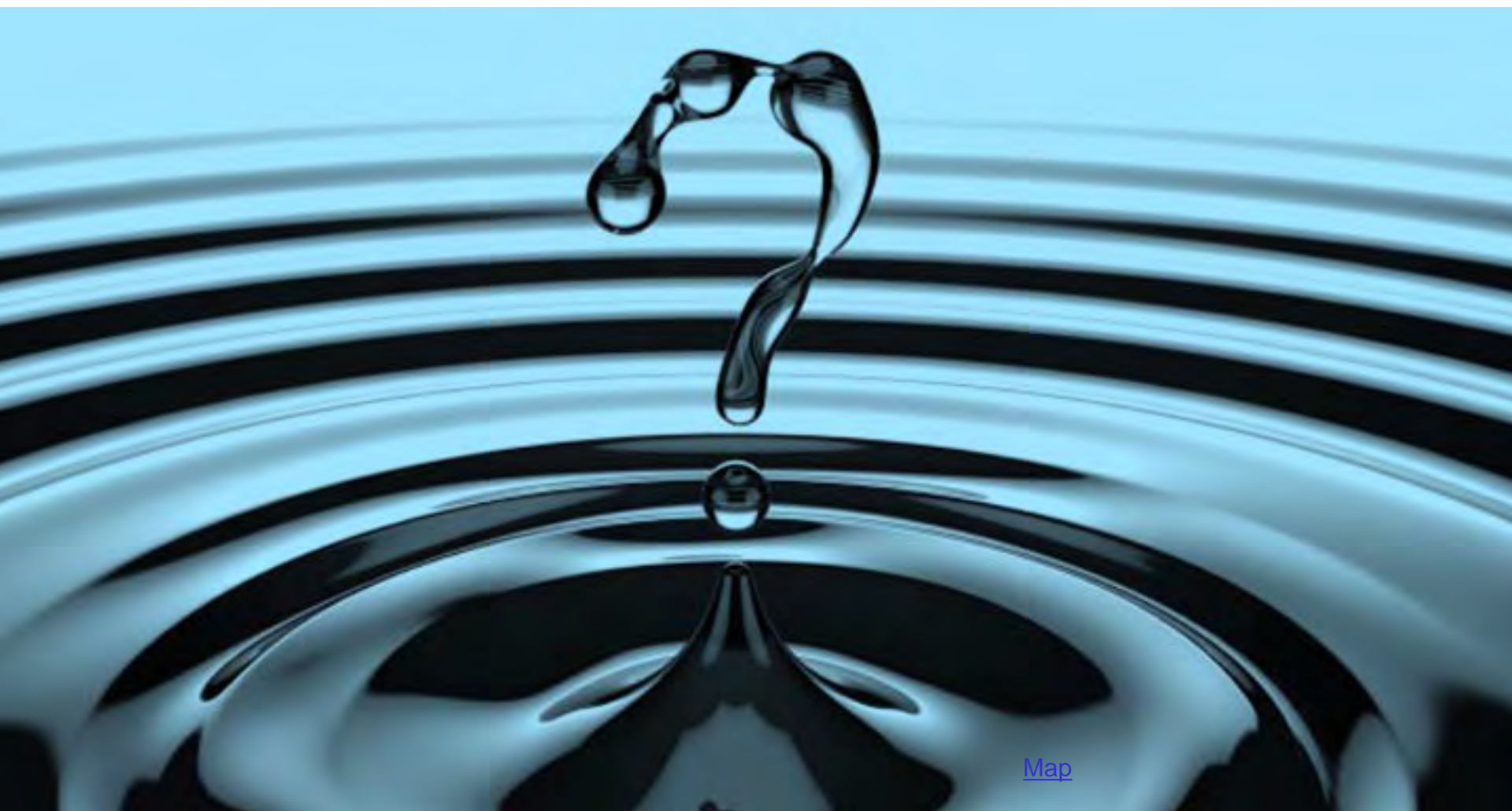
What can I do?

- Clean boater hygiene – inspect, remove, drain, don't move
 - Report violations – 1-800-TIP-WDNR and/or Sheriff's Department
 - Signs
- Check boats, docks, and other equipment
- Decontaminate equipment
- Participate in or start local lake/ river organizations
 - Newsletters
- Provide your name and contact information for future volunteer or funding contribution opportunities
 - Citizen Lake Monitoring Network - AIS
 - Watercraft inspection

*Tell friends, family and neighbors
what they can do, too!*



Shell Lake



[Map](#)